

Bass Guitar

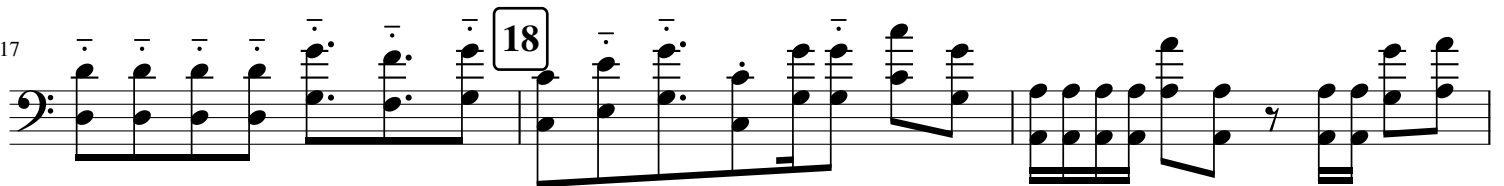
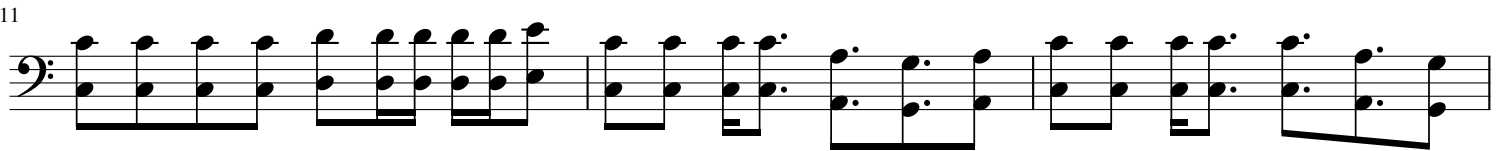
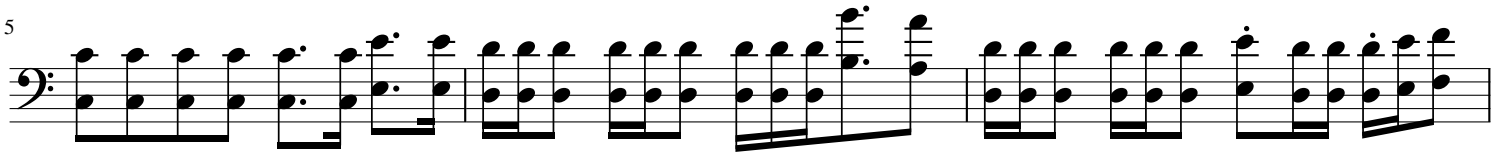
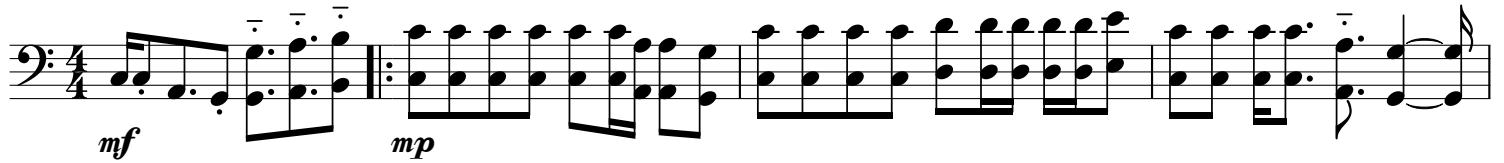
Perplex Express

From *Mario Party 8*

Composed by Yoshihiro Tsukahara

Transcribed by James Hyun

♩ = 130



20



Example 1

23

The image shows the bass line of a musical score for 'The Rose Tree'. It begins with a treble clef and a key signature of one flat (B-flat). The melody starts on a whole note G2, followed by a half note F2, and then a quarter note E2. This is followed by a quarter rest, then a quarter note D2, a half note C2, and a quarter note B1. The next measure contains a quarter note A1, a half note G1, and a quarter note F1. This is followed by a quarter note E1, a half note D1, and a quarter note C1. The final measure contains a quarter note B1, a half note A1, and a quarter note G1. The score is written on a single staff with a treble clef and a key signature of one flat.

[illegible]

29

[illegible]

35

Example 10